

DPI IN ACTION: RESCO



Accelerating a ‘whole of value chain’ response to responsibly sourcing minerals and metals, to ultimately drive more demand for responsibly sourced practices and products.

In partnership with the Rockefeller Foundation, the Development Partner Institute is leading an ongoing multi-stakeholder dialogue on ‘Responsible Sourcing: Mine to Consumer’ or RESCO, to create an alliance for collective action.

DPI’s Responsible Sourcing Coalition held four Sprints in 2020: *Community and civil society, Investors and financiers, Mineral product and customer facing users of mining materials, and Miners and processors.*

Participants in each of these four sessions shared their current responsible sourcing needs, expectations, and challenges.

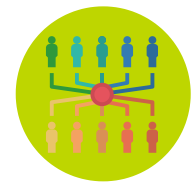
WHOLE OF VALUE CHAIN



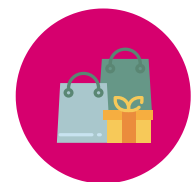
INVESTMENT AND FINANCE



MINING COMPANIES



COMMUNITY AND CIVIL SOCIETY



B2B/B2C COMPANIES

In 2021, we are aiming to:

Broaden and deepen the coalition and its actions, build a common understanding among stakeholders, and share learnings with a wider audience.

Program Supporters:



The
**ROCKEFELLER
FOUNDATION**

Life Is On



Email julia@dpimining.org to get involved in RESCO!